



JEREMY SMITH



22 Hazelton Avenue, Toronto, Ontario, M5R 2E2 (416) 964-8197 fax: (416) 964-5912
email: godard@godardgallery.com web: www.godardgallery.com

Cover image: **Rain** 2013 egg tempera on masonite 22 1/2 x 27 3/4 inches

JEREMY SMITH

New Paintings and Drawings

September 13 - October 11, 2014

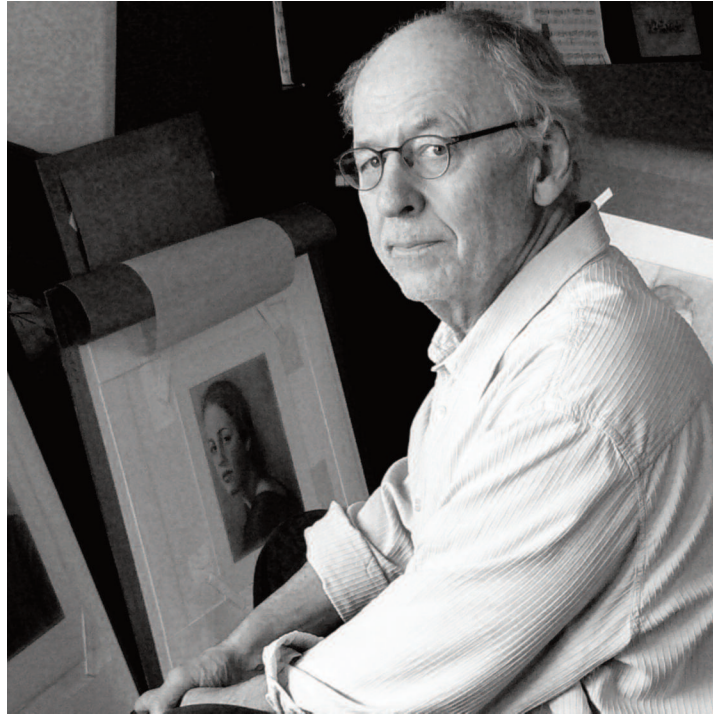
JEREMY SMITH was born in 1946 in Louth, England and moved to Canada with his family in 1948. He received a Bachelor of Arts in Fine Arts and French from the University of Western Ontario in 1969 and studied Japanese brush technique in Tokyo from 1969-71.

Smith's work has been exhibited at the Albright Knox Gallery, Buffalo, New York; Art Gallery of Greater Victoria, British Columbia; Beaverbrook Art Gallery, Fredericton, New Brunswick; Fischer Fine Art, London, England; Justina M. Barnicke Gallery, Hart House, University of Toronto and Kitchener-Waterloo Art Gallery, Ontario, among others.

His work can be found in many public, corporate and private collections including: Art Gallery of Hamilton; Art Gallery of Ontario; Museum London, Ontario; BDO Dunwoody & Co.; Fidelity Investments, Boston; RBC Financial Group; Scotiabank and T. D. Bank Group.

Jeremy Smith lives and works in Kitchener, Ontario and has been represented by Mira Godard Gallery for over four decades.

Photo: Meg Crawford



For me, painting and drawing have always been of equal importance. When planning a work, somehow the idea dictates which of the two it should be, and both give meaning in different ways.

Painting, somewhat like a descriptive novel, takes shape over a long period of time and has a base in reality.

Drawing, on the other hand, is more like a short story, concise and to the point. They are not merely studies for paintings, but are important in their own right.

I am very fond of both mediums and often when working in one, I look forward to getting back to the other.

Jeremy Smith 2014

Colour Plates

Artist and Model
2012-2013
egg tempera on masonite
30 1/2 x 27 inches



Moonlight, Lake Joseph

2013

egg tempera on masonite

9 x 9 7/8 inches



Nude Descending a Staircase

2013

egg tempera on masonite

23 7/8 x 15 3/4 inches



After Vermeer

2010

original signed screenprint

14 1/8 x 12 1/4 inches

edition: 28



Window on the Mediterranean

2010

egg tempera on masonite

21 7/8 x 21 7/8 inches



Mediterranean

2010

egg tempera on masonite

9 1/4 x 12 3/8 inches



Girl in a Chair
2012
egg tempera on masonite
35 3/4 x 26 3/4 inches

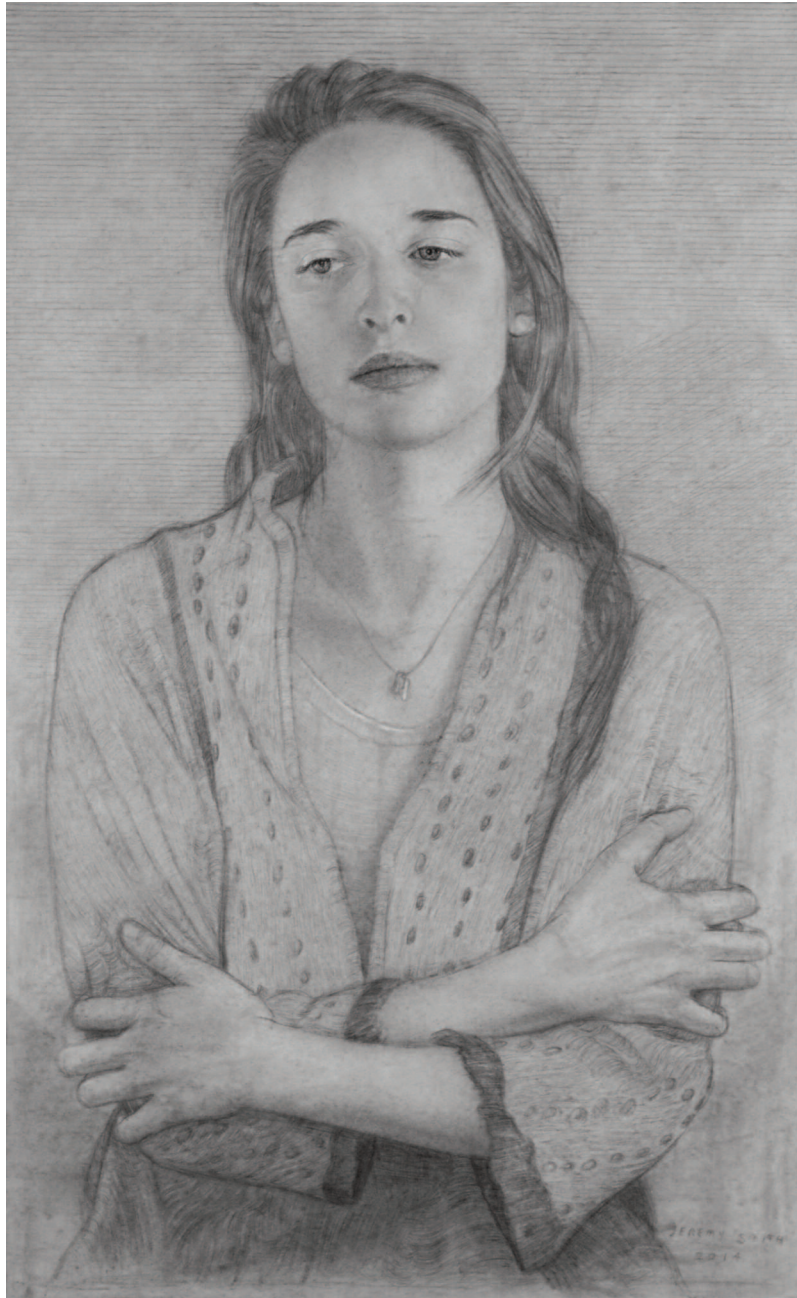


Girl with Crossed Arms

2014

pencil on paper

25 5/8 x 16 inches





Red-Winged Blackbird with Raindrops 2013 egg tempera on masonite 9 x 22 7/8 inches

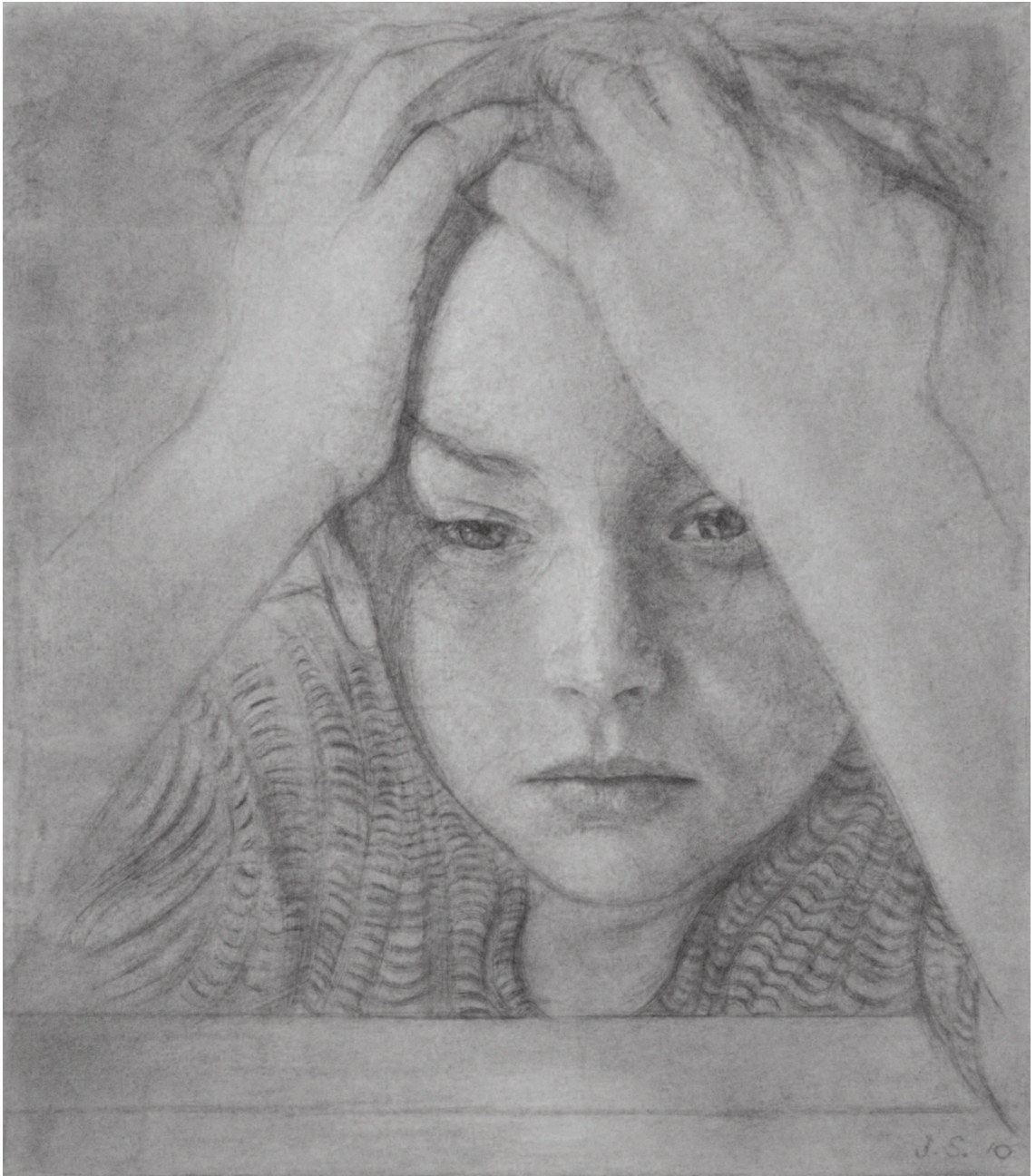


Julian

2010

pencil on paper

12 1/2 x 11 inches

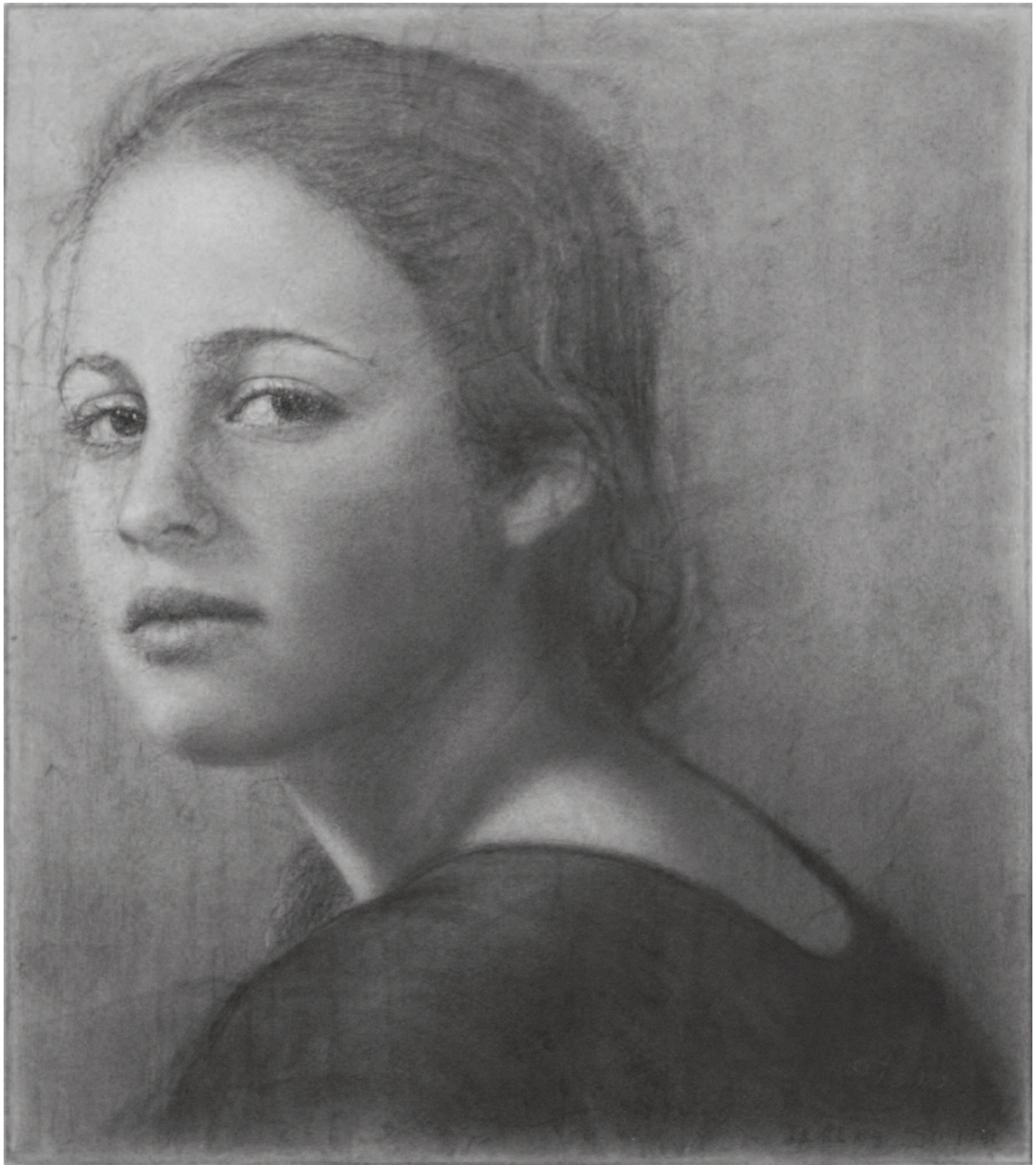


Girl in a Black Top

2007-2010

pencil on paper

12 1/2 x 11 inches





Study for Gull Island, September 2012 pencil on paper 8 1/2 x 10 1/2 inches



Study for Gull Island, September 2012 pencil on paper 8 1/2 x 10 5/8 inches



Gull Island, September 2012 egg tempera on masonite 19 1/4 x 23 7/8 inches

Private Room

2013-2014

egg tempera on masonite

28 1/4 x 31 3/4 inches

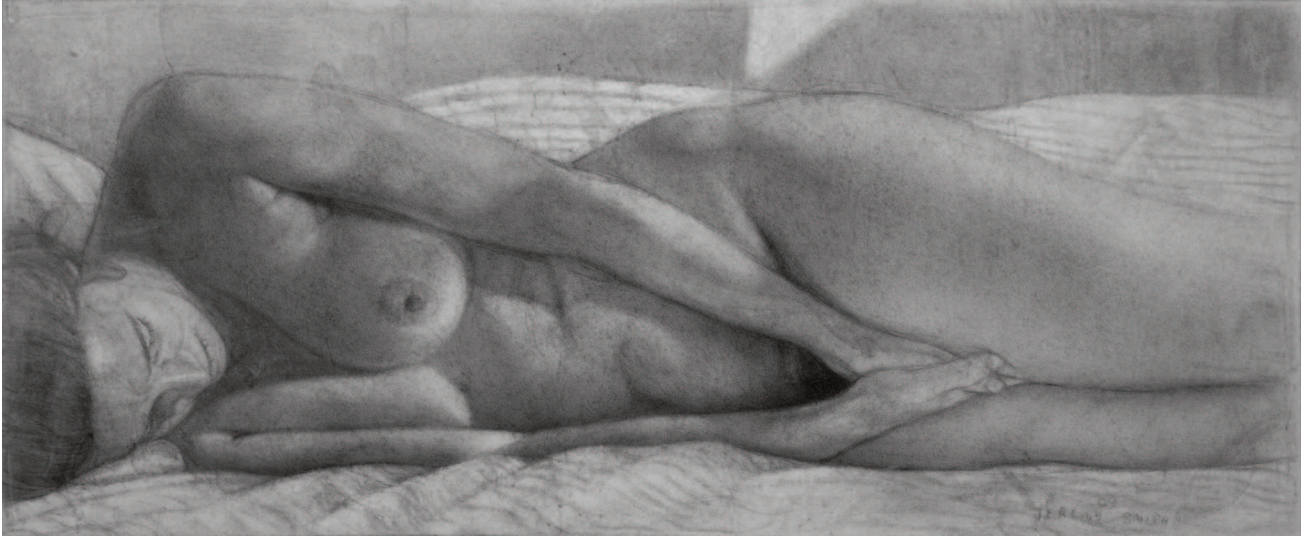


Study for Private Room

2009

pencil on paper

10 1/2 x 25 1/4 inches



Sideroad

2011

egg tempera on masonite

16 x 17 1/4 inches



Self-Portrait (Mirror)

2004

original signed screenprint

13 x 10 1/2 inches

edition: 29



Musician

2011

egg tempera on masonite

21 3/4 x 21 inches

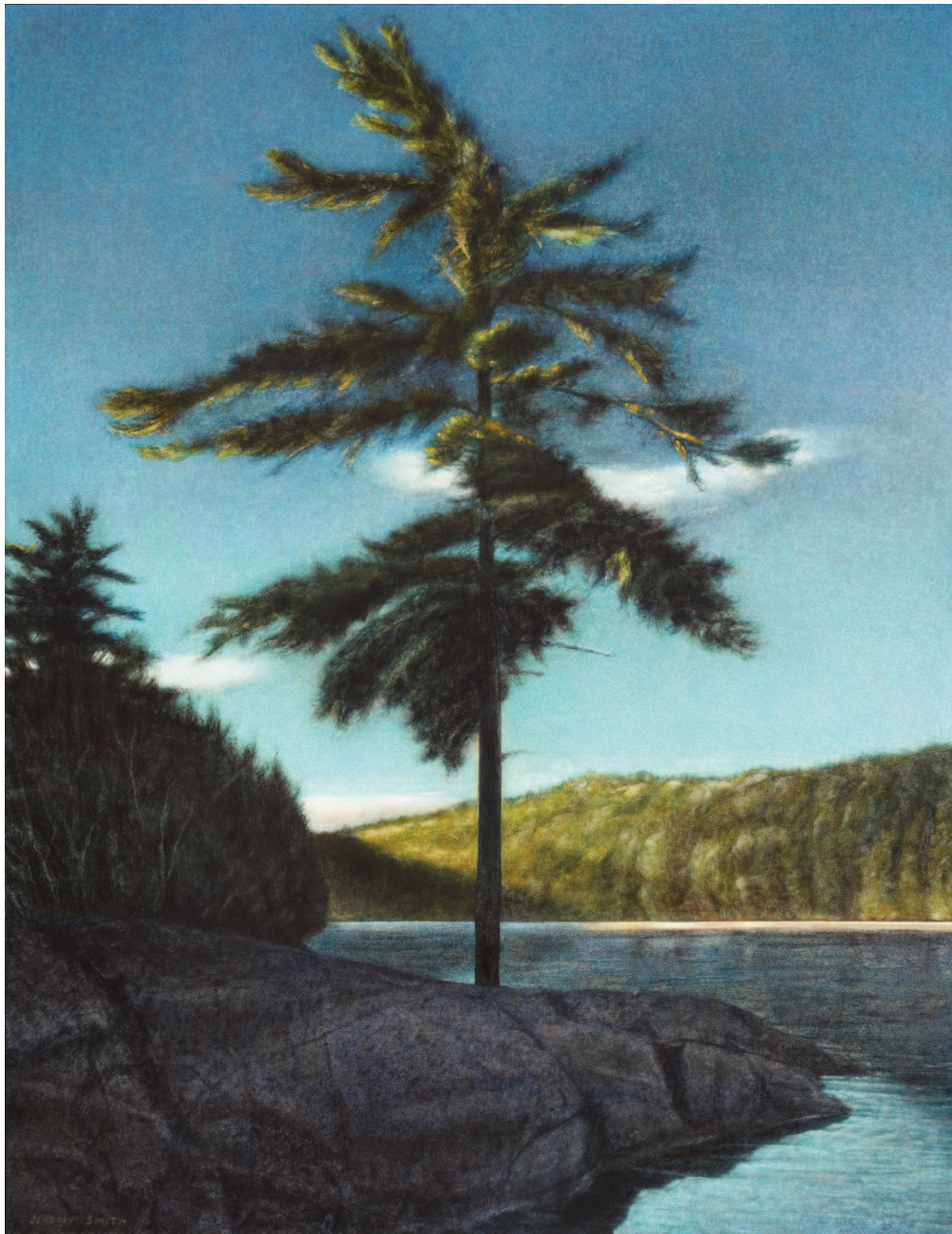


Finger Bay

2010-2011

egg tempera on masonite

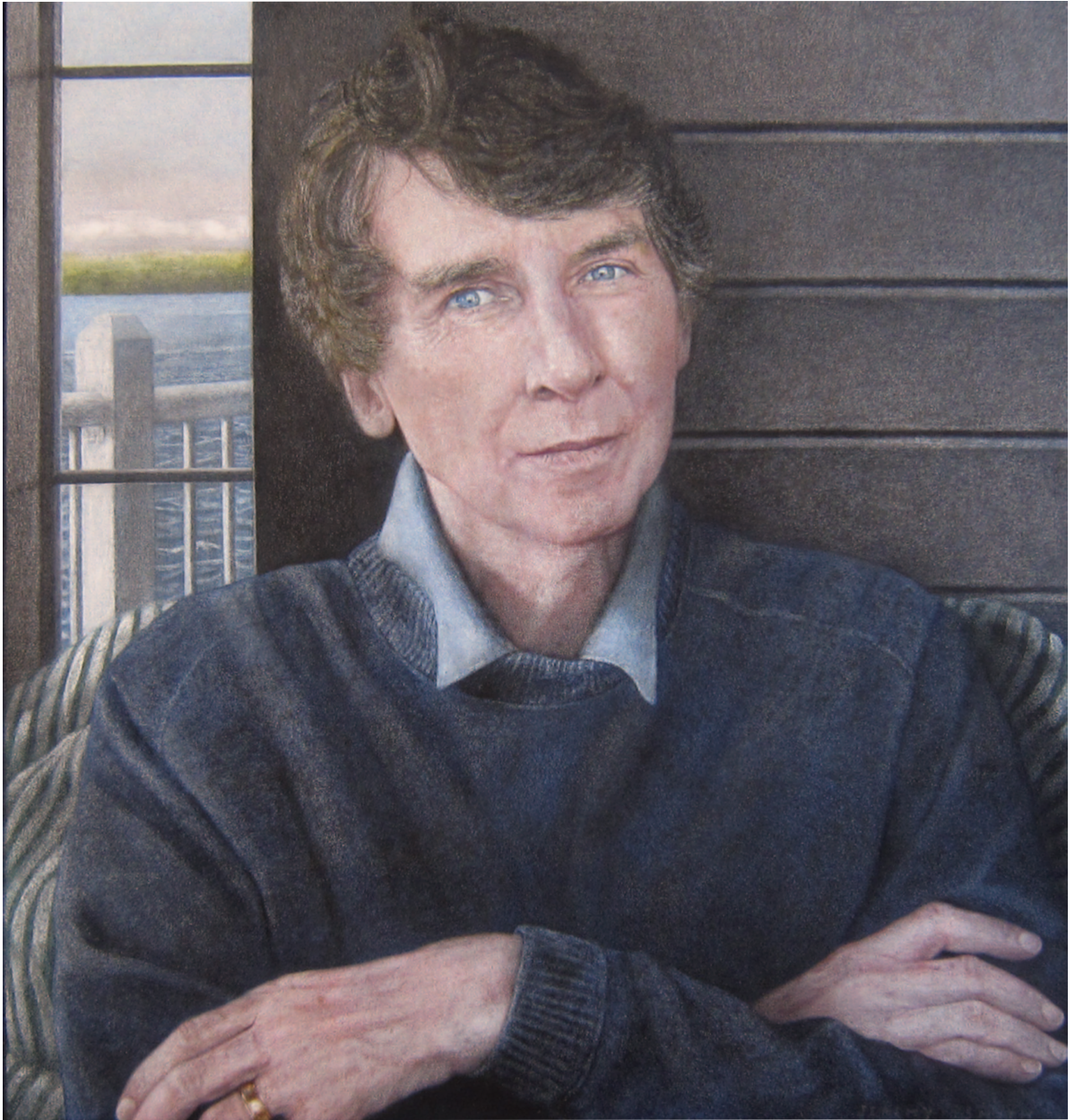
30 7/8 x 24 inches



Girl in a Scarf
2009
pencil on paper
20 x 14 1/2 inches



John in a Blue Sweater
2012
egg tempera on masonite
17 x 16 inches



List of works

- After Vermeer 2010
original signed screenprint
14 1/8 x 12 1/4 inches
edition: 28 Page 12
- Artist and Model 2012-2013
egg tempera on masonite
30 1/2 x 27 inches Page 6
- Finger Bay 2010-2011
egg tempera on masonite
30 7/8 x 24 inches Page 40
- Girl in a Black Top 2007-2010
pencil on paper
12 1/2 x 11 inches Page 26
- Girl in a Chair 2012
egg tempera on masonite
35 3/4 x 26 3/4 inches Page 18
- Girl in a Scarf 2009
pencil on paper
20 x 14 1/2 inches Page 42
- Girl with Crossed Arms 2014
pencil on paper
25 5/8 x 16 inches Page 20
- Gull Island, September 2012
egg tempera on masonite
19 1/4 x 23 7/8 inches Page 29

John in a Blue Sweater 2012
egg tempera on masonite
17 x 16 inches

Page 44

Julian 2010
pencil on paper
12 1/2 x 11 inches

Page 24

Mediterranean 2010
egg tempera on masonite
9 1/4 x 12 3/8 inches

Page 16

Moonlight, Lake Joseph 2013
egg tempera on masonite
9 x 9 7/8 inches

Page 8

Musician 2011
egg tempera on masonite
21 3/4 x 21 inches

Page 38

Nude Descending a Staircase 2013
egg tempera on masonite
23 7/8 x 15 3/4 inches

Page 10

Private Room 2013-2014
egg tempera on masonite
28 1/4 x 31 3/4 inches

Page 30

Rain 2013
egg tempera on masonite
22 1/2 x 27 3/4 inches

Front cover

Red-Winged Blackbird with Raindrops 2013 egg tempera on masonite 9 x 22 7/8 inches	Page 22
Self-Portrait (Mirror) 2004 original signed screenprint 13 x 10 1/2 inches edition: 29	Page 36
Sideroad 2011 egg tempera on masonite 16 x 17 1/4 inches	Page 34
Study for Rain 2013 pencil on paper 10 1/4 x 12 1/4 inches	Back cover
Study for Gull Island, September 2012 pencil on paper 8 1/2 x 10 1/2 inches	Page 28
Study for Gull Island, September 2012 pencil on paper 8 1/2 x 10 5/8 inches	Page 28
Study for Private Room 2009 pencil on paper 10 1/2 x 25 1/4 inches	Page 32
Window on the Mediterranean 2010 egg tempera on masonite 21 7/8 x 21 7/8 inches	Page 14

© 2014 Mira Godard Gallery

Artwork photography: Michael Cullen, Trent Photographics
Printing: Springfield Graphics, Toronto, Ontario

All rights reserved
ISBN# 978-0-9691144-3-7

Verso: **Study for Rain** 2013 pencil on paper 10 1/4 x 12 1/4 inches



MG Mira Godard
Gallery

22 Hazelton Avenue, Toronto, Ontario, M5R 2E2 (416) 964-8197 fax: (416) 964-5912
email: godard@godardgallery.com web: www.godardgallery.com